



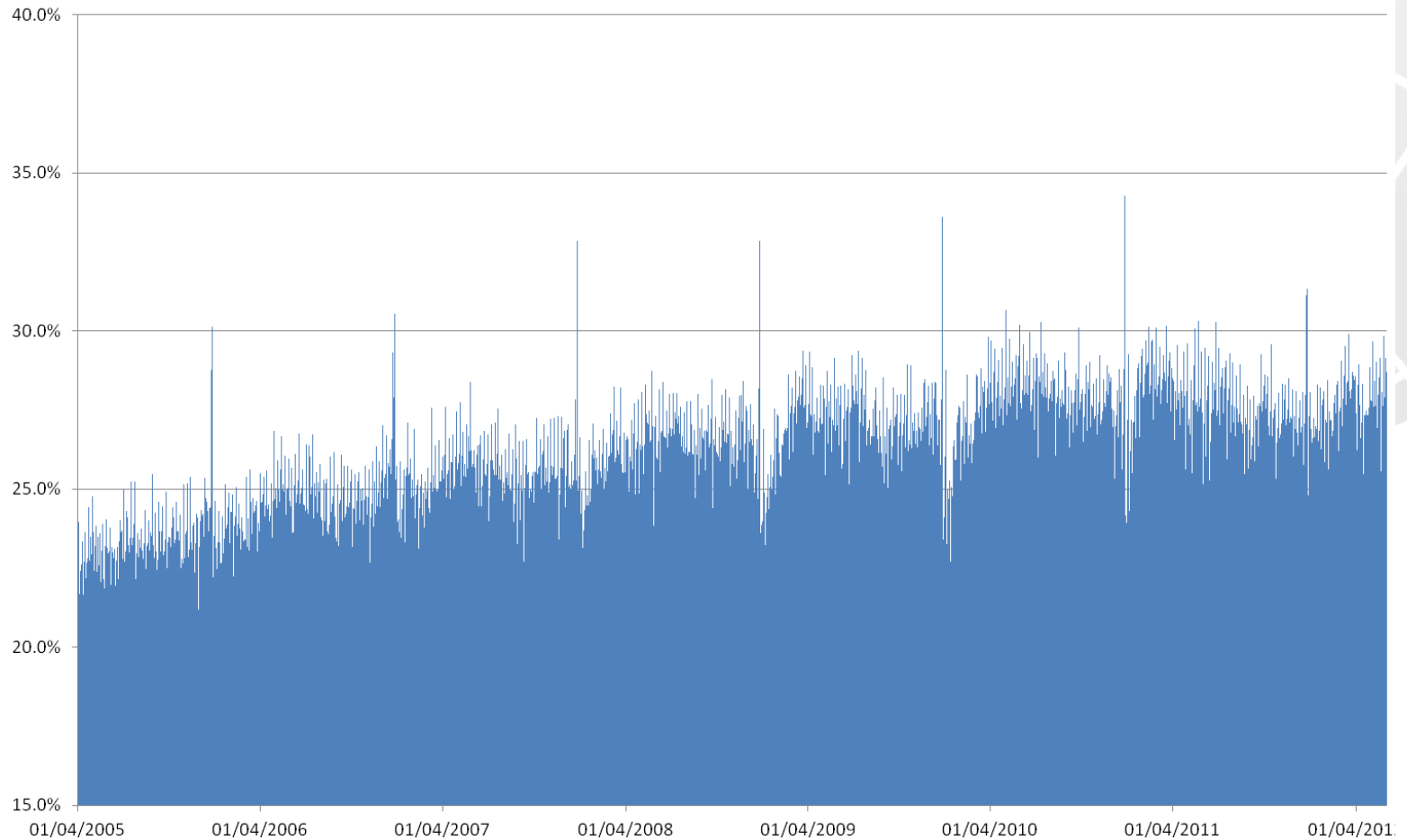
# The power of information

18<sup>th</sup> November 2013

Paul Robinson  
Head of Market Intelligence

[www.chks.co.uk](http://www.chks.co.uk)

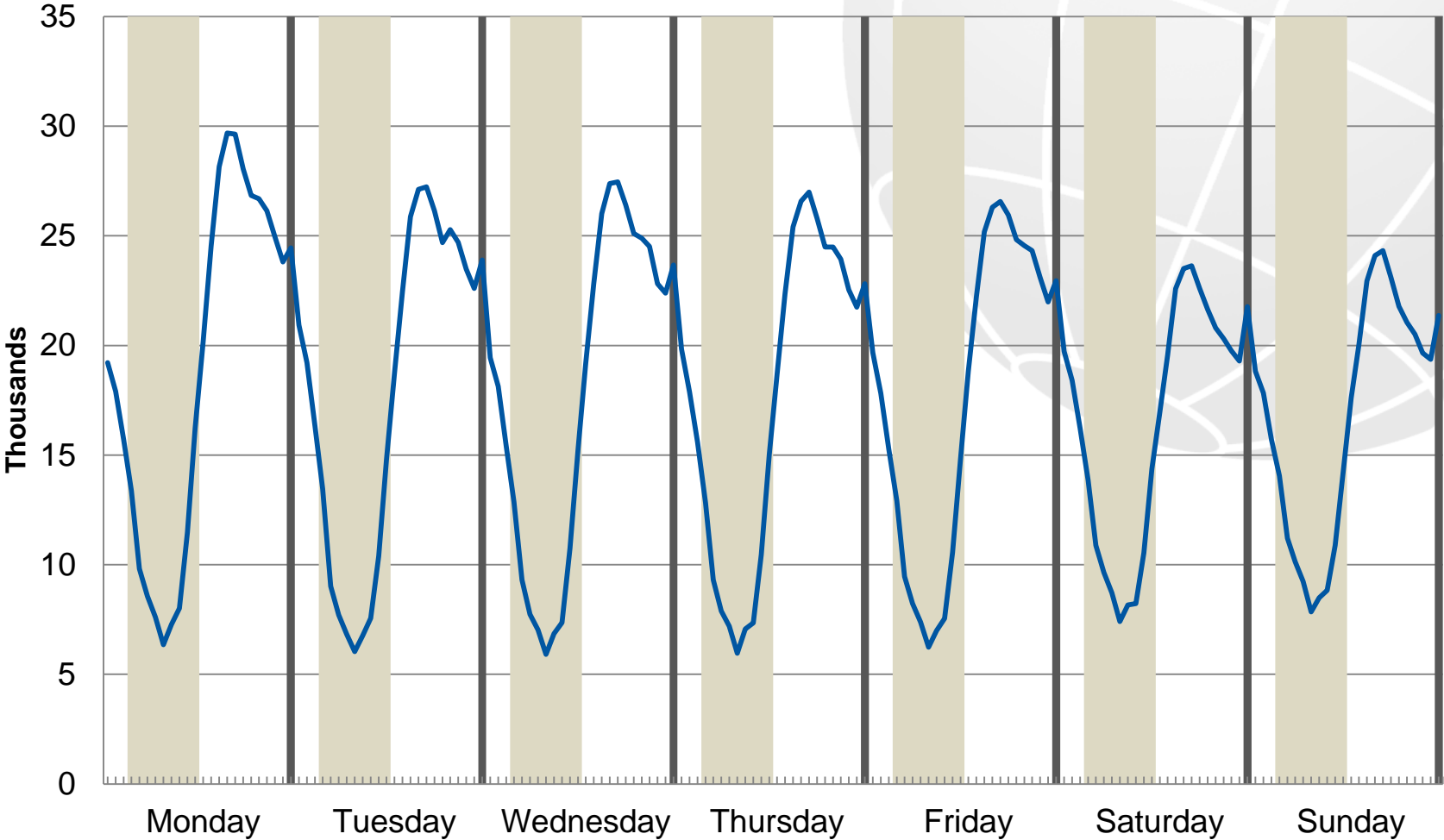
# %0LoS – 2005 to 2012



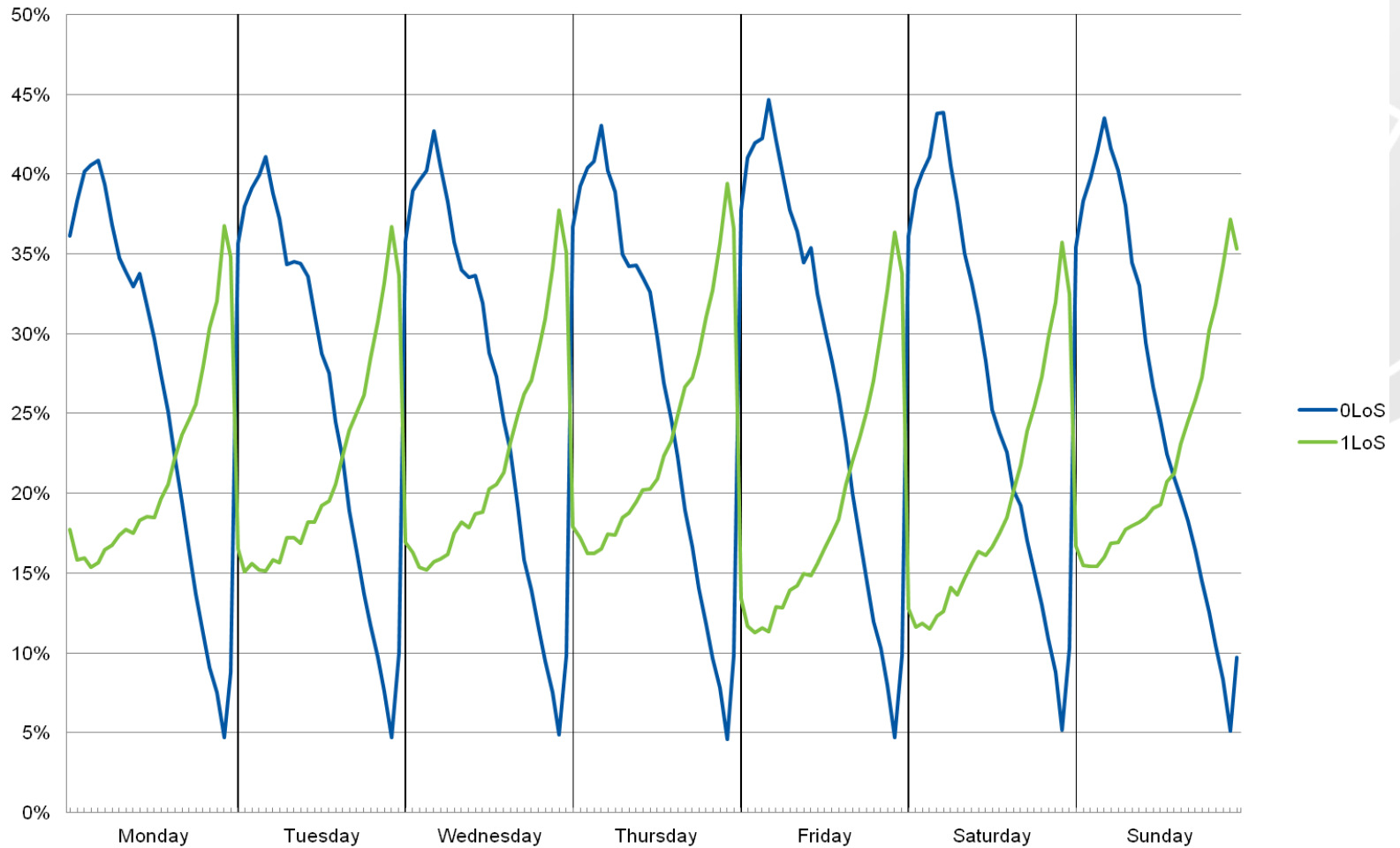
# Demand?



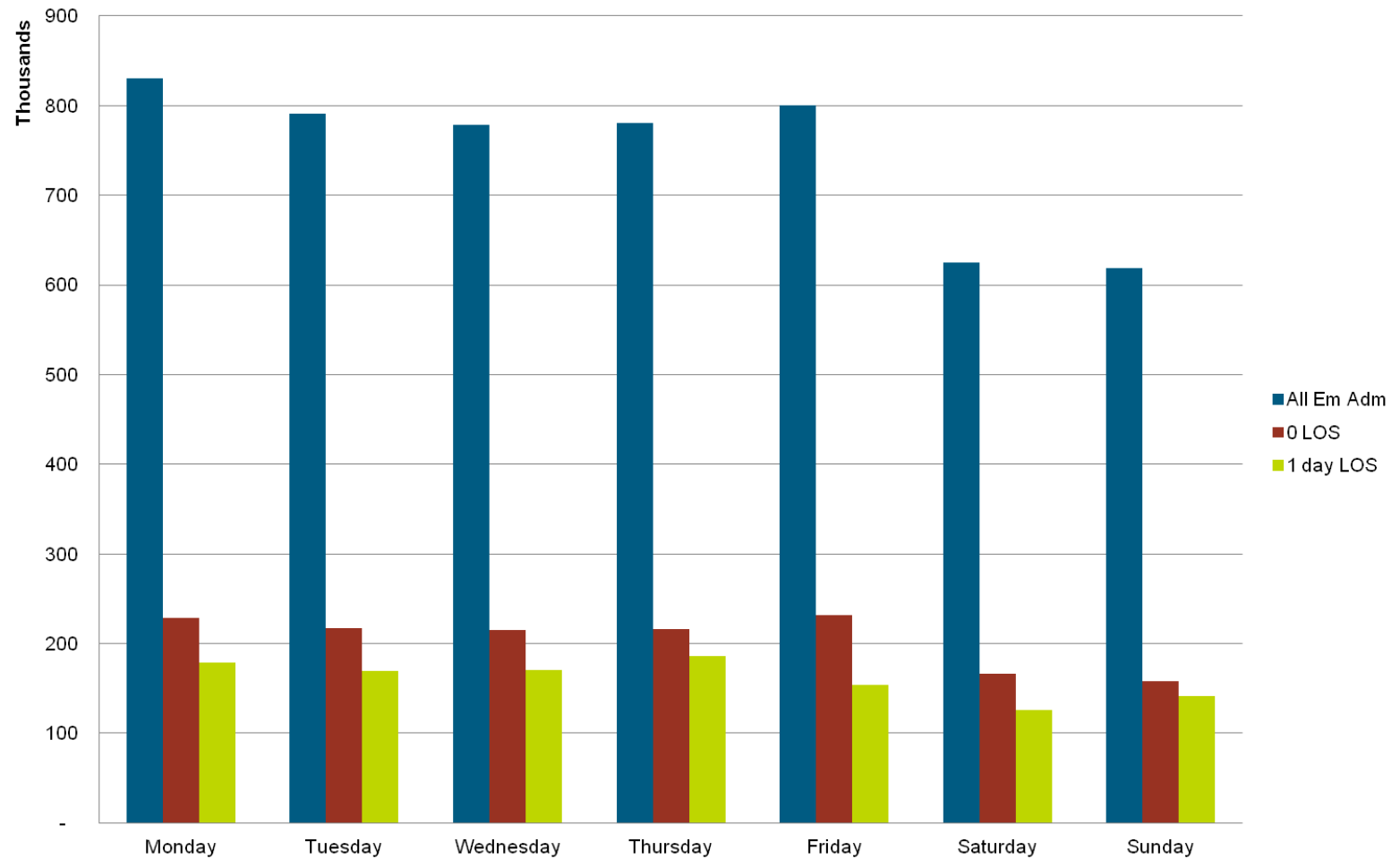
**Emergency admissions from A&E by hour**  
(grey shading shows the "quietest" period 03:00-12:00)



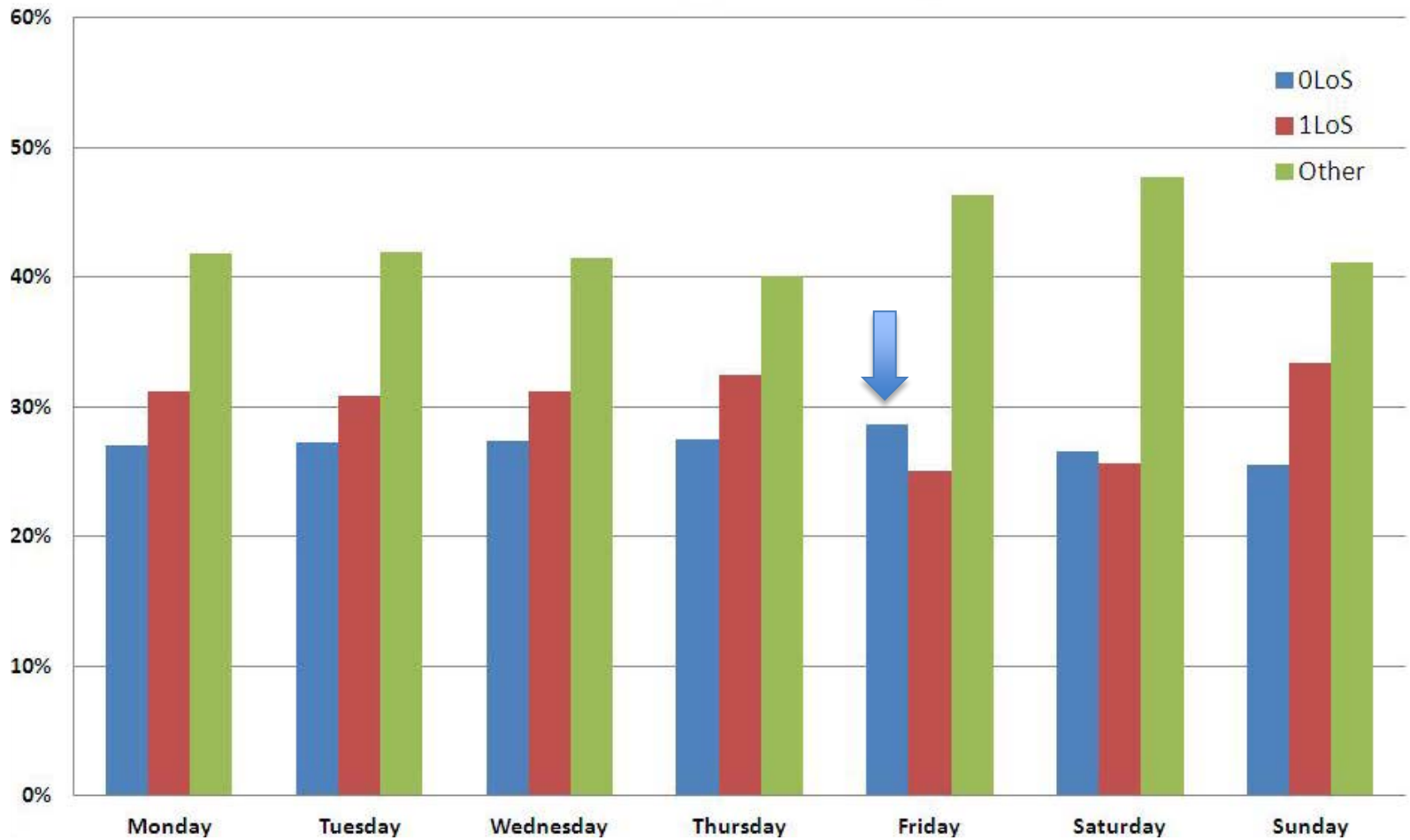
# %age discharged in 0/1 day



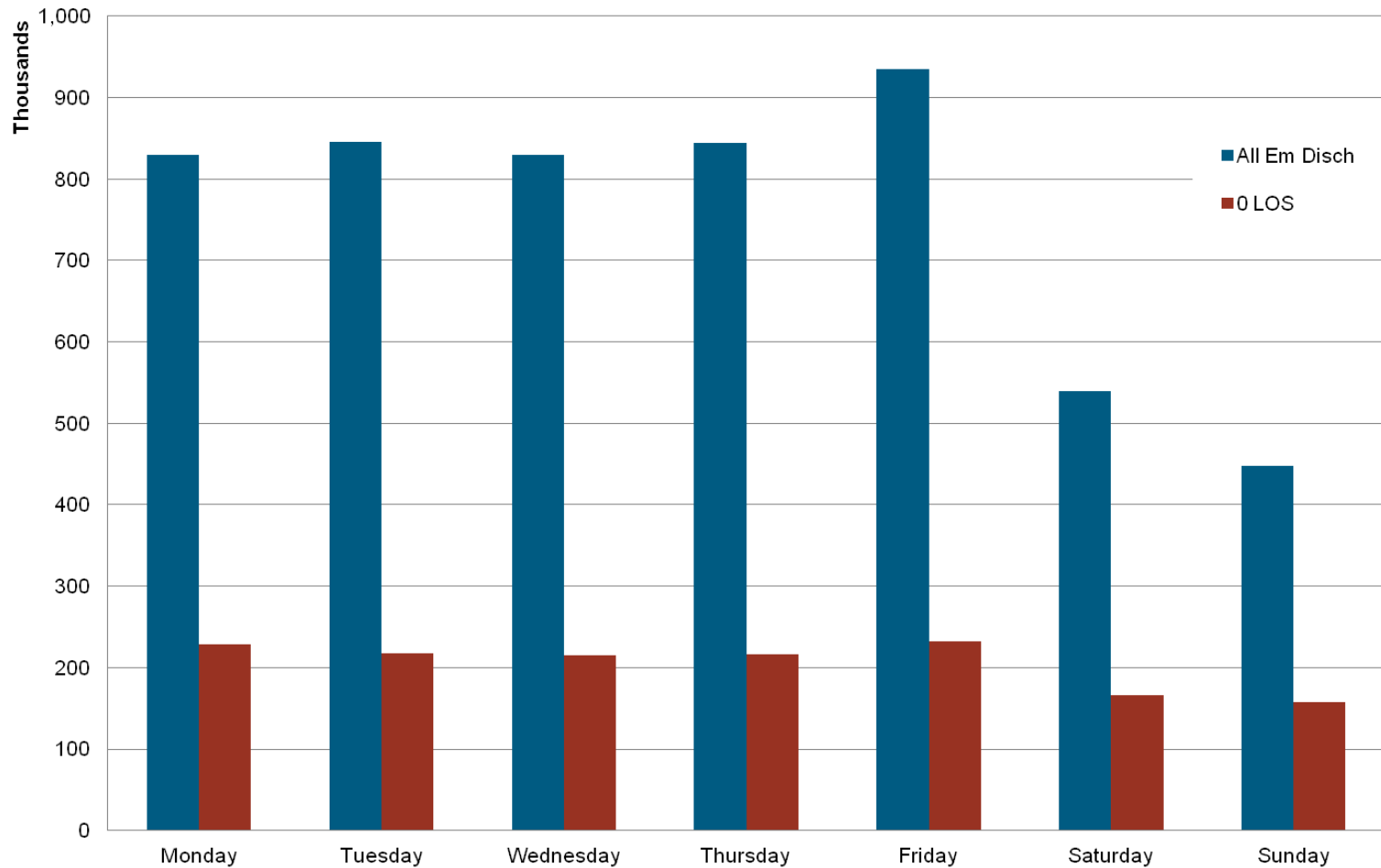
# Emergency admissions



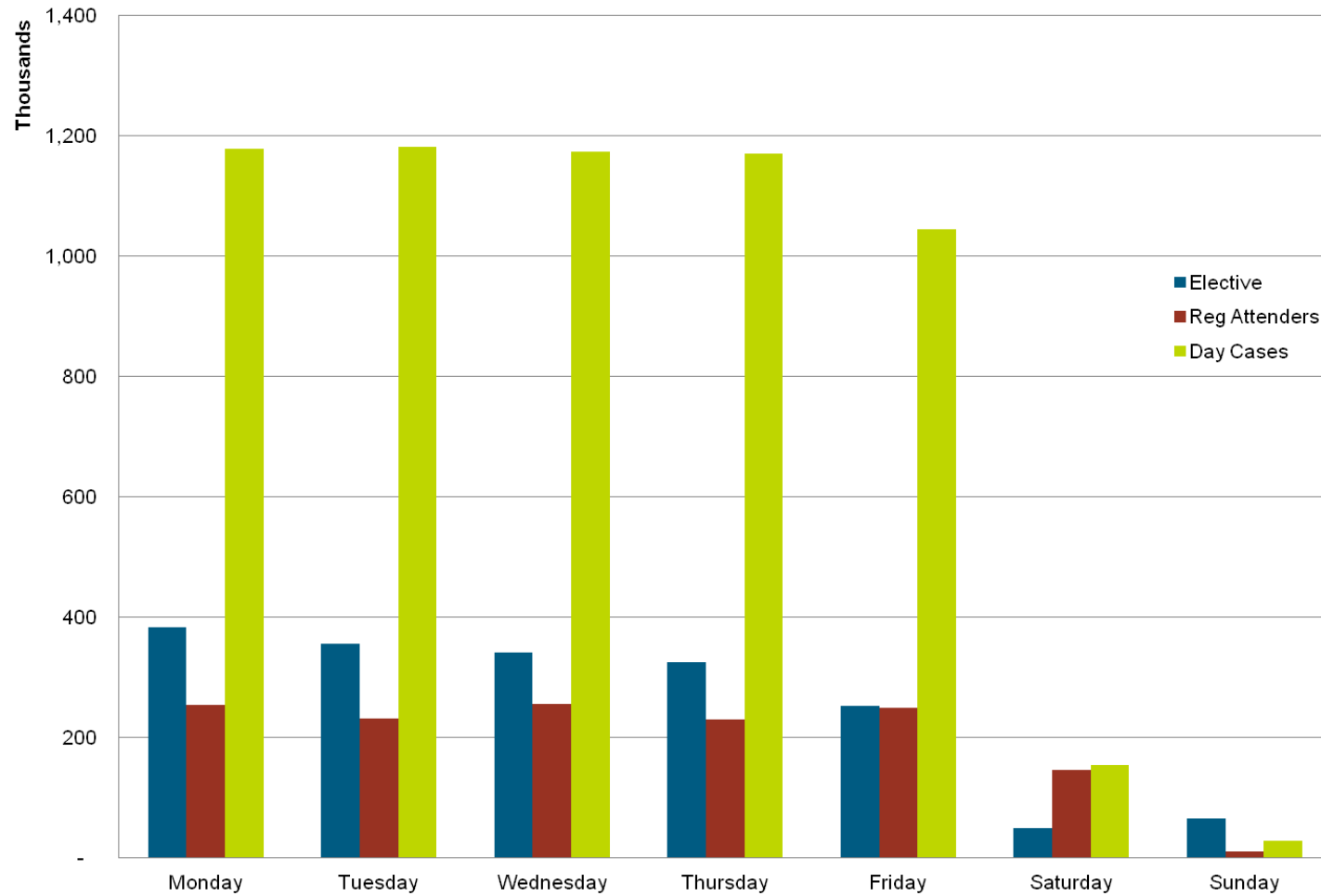
# Proportion discharged



# Discharges of emergencies

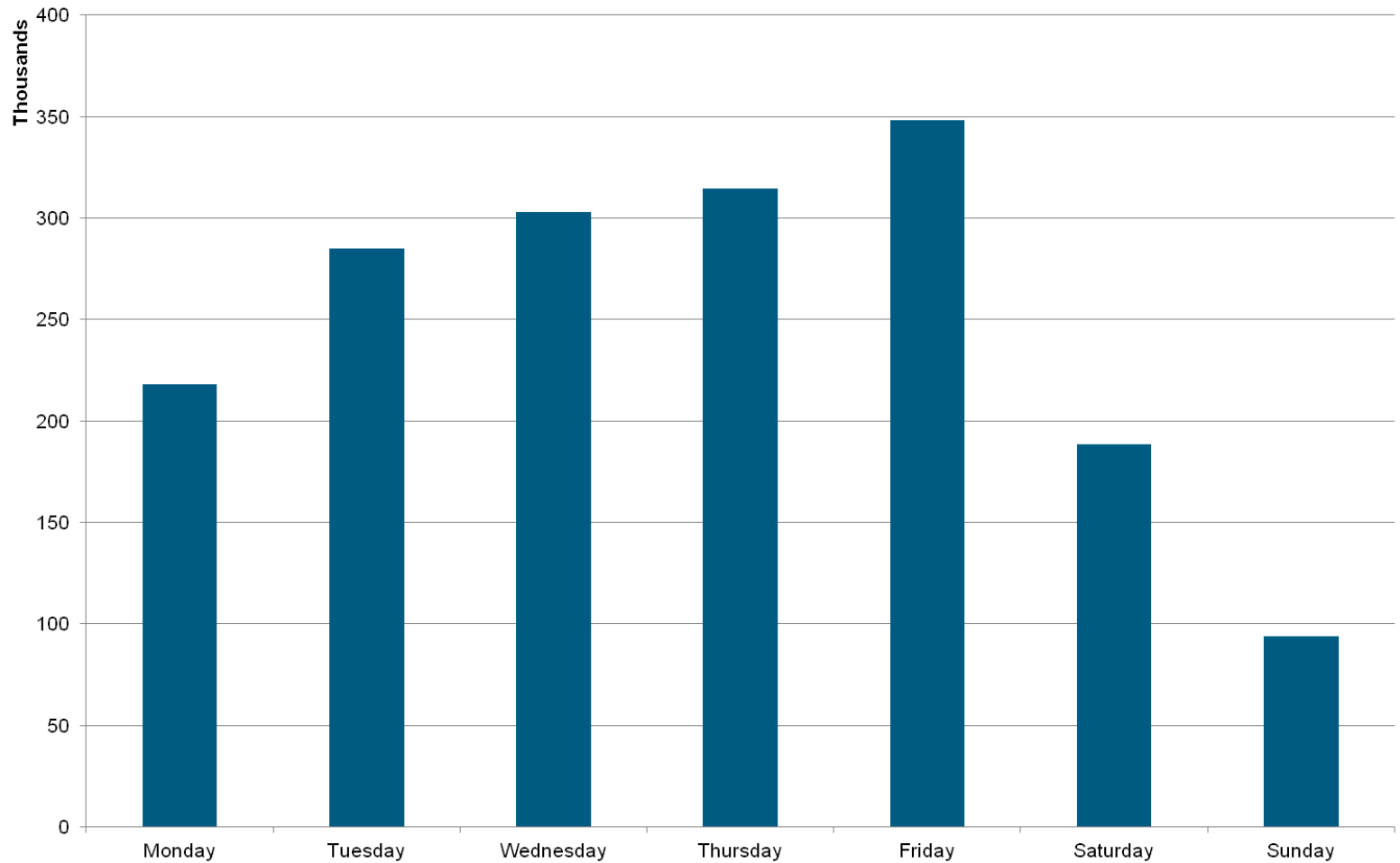


# Elective admissions



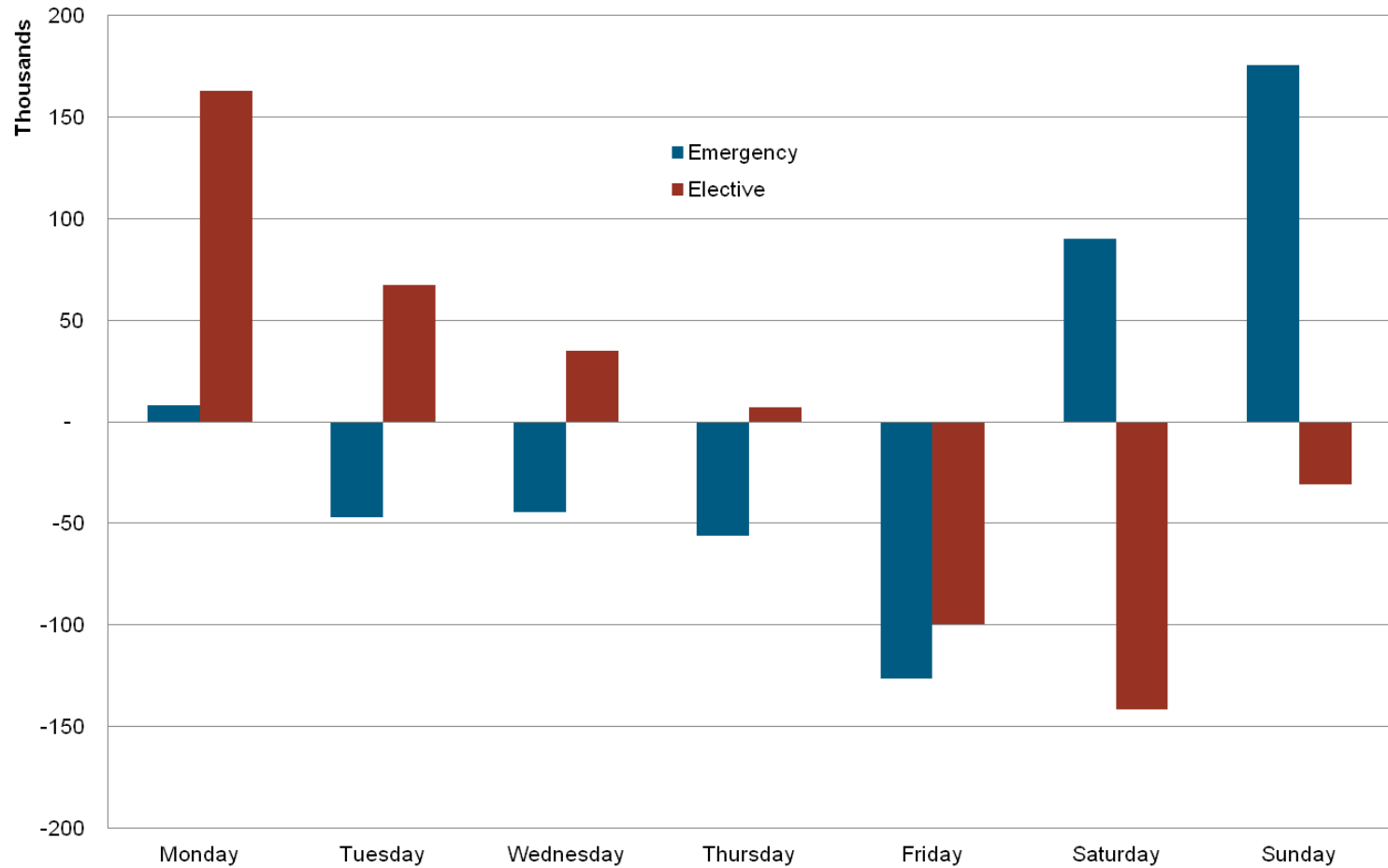


# Discharges of electives

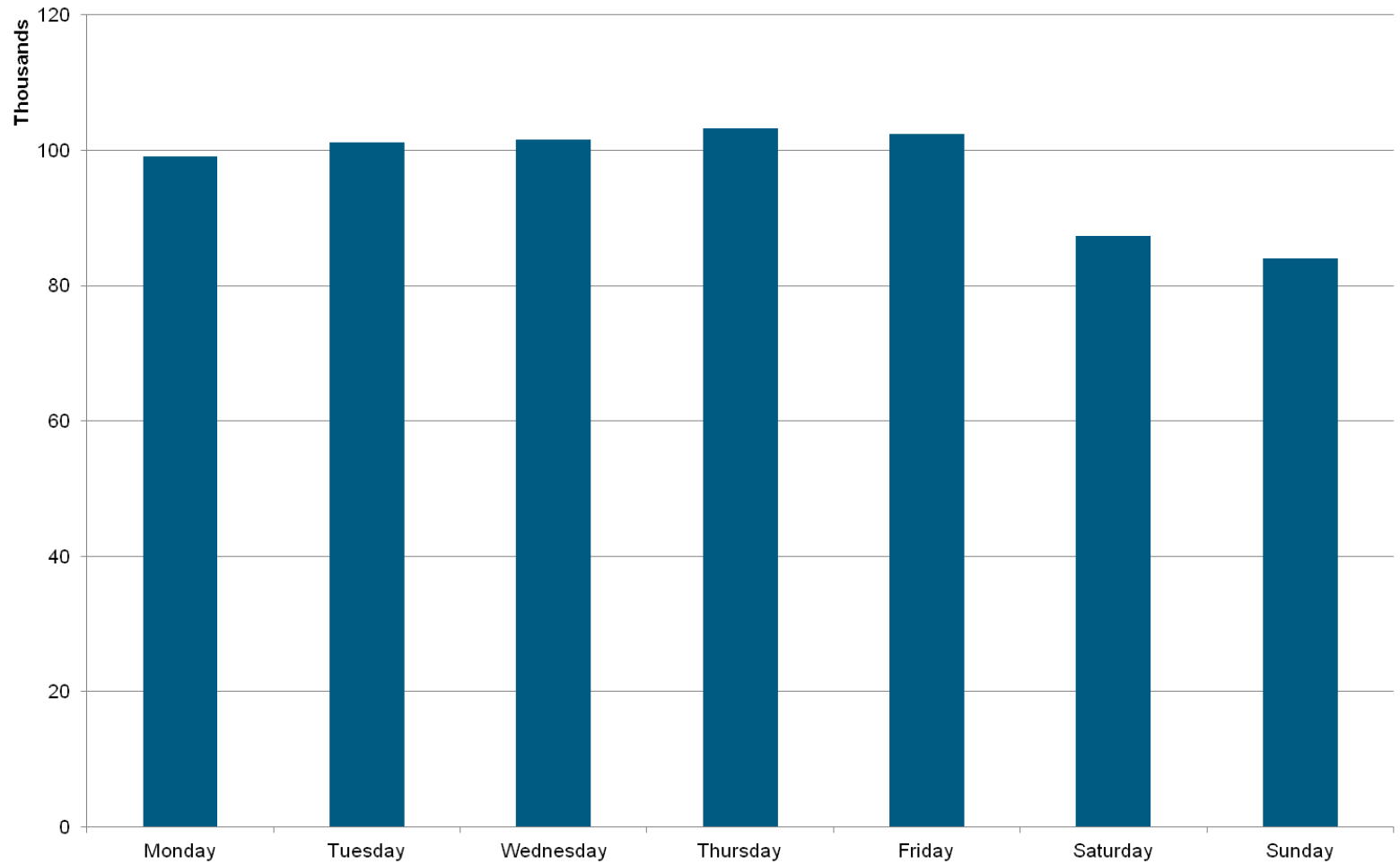


# Relative volume adm/disch

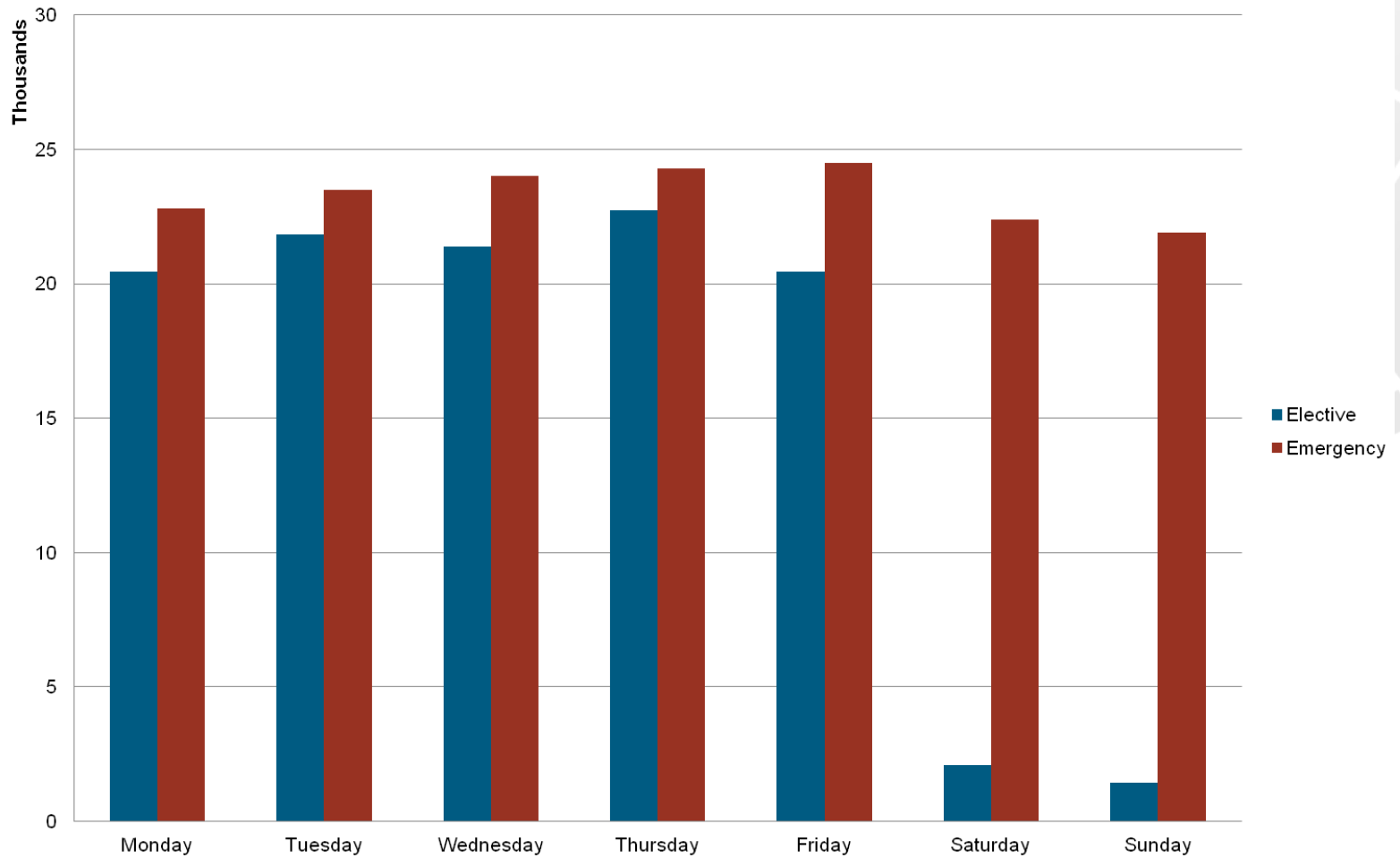
(-ve = more discharges)



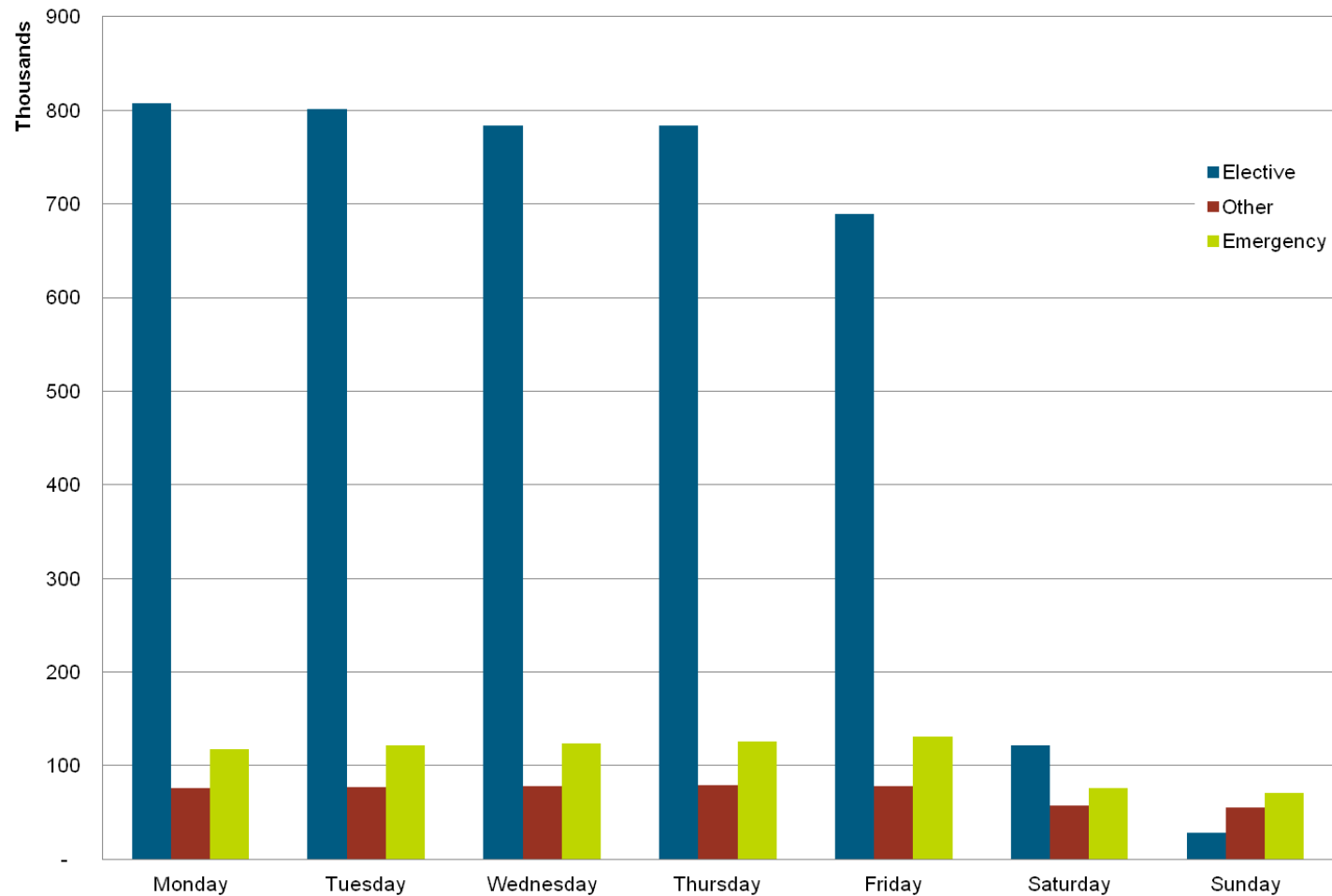
# Births



# C sections



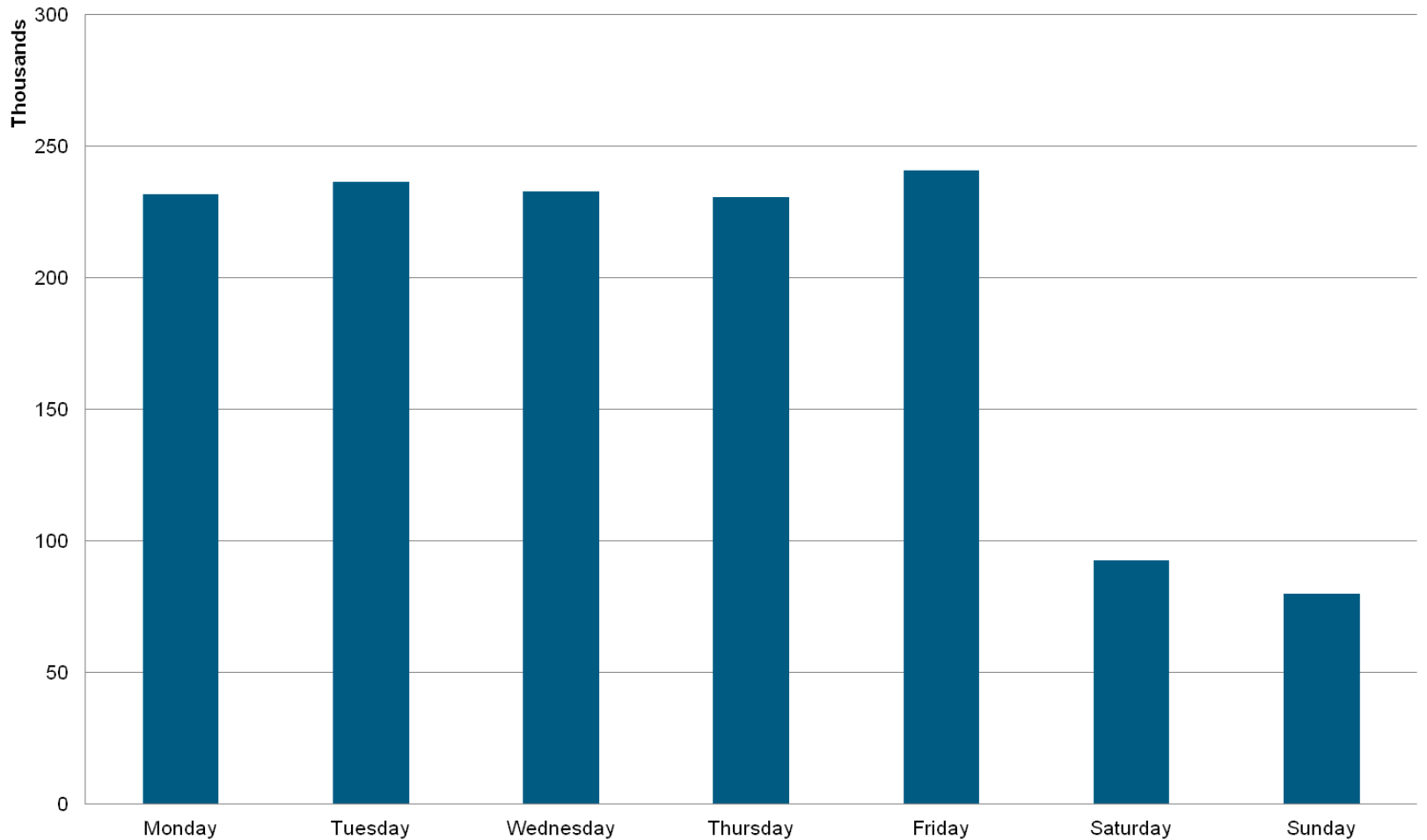
# Procedures



# Diagnostics

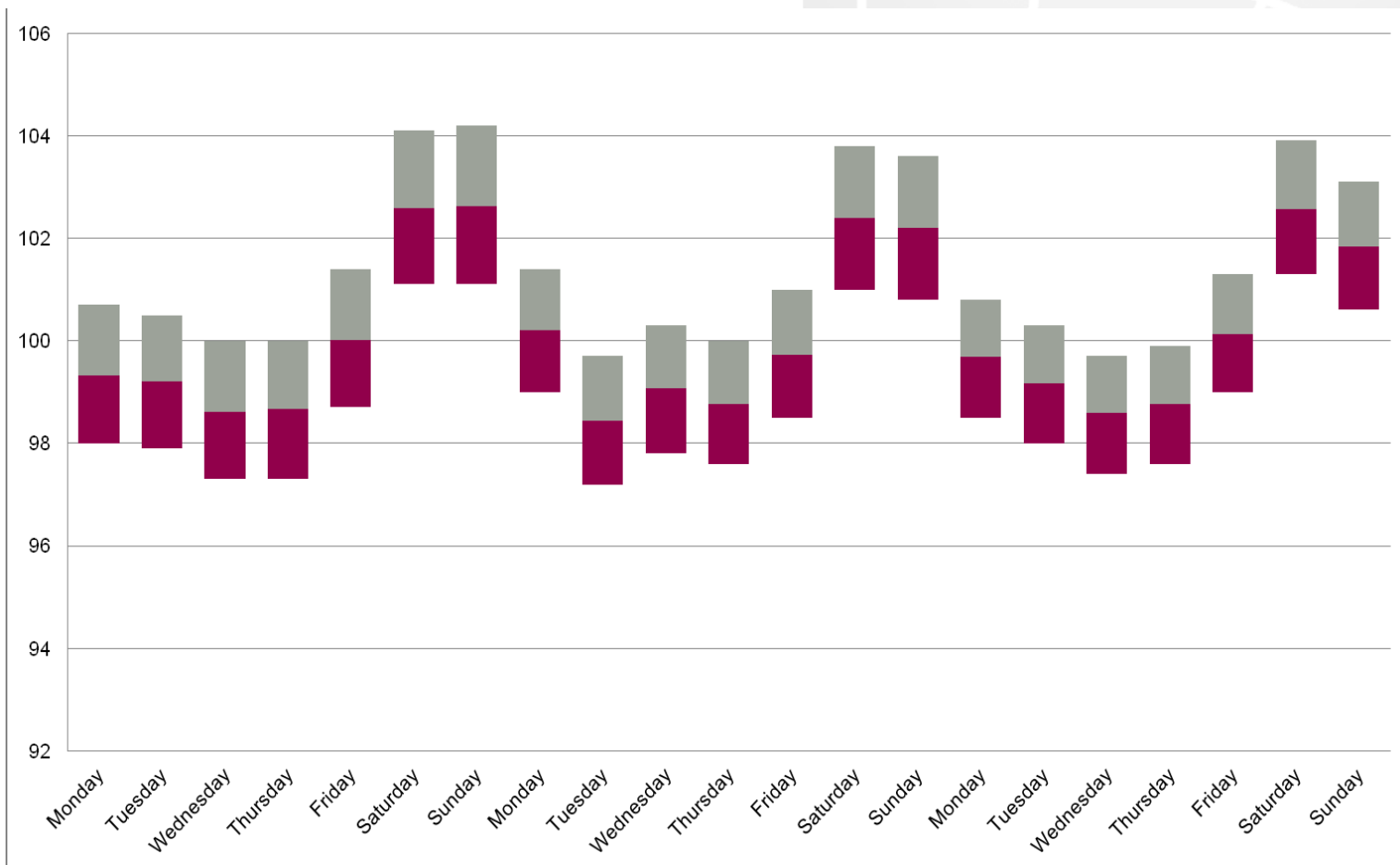
(for emergency patients only)

Text



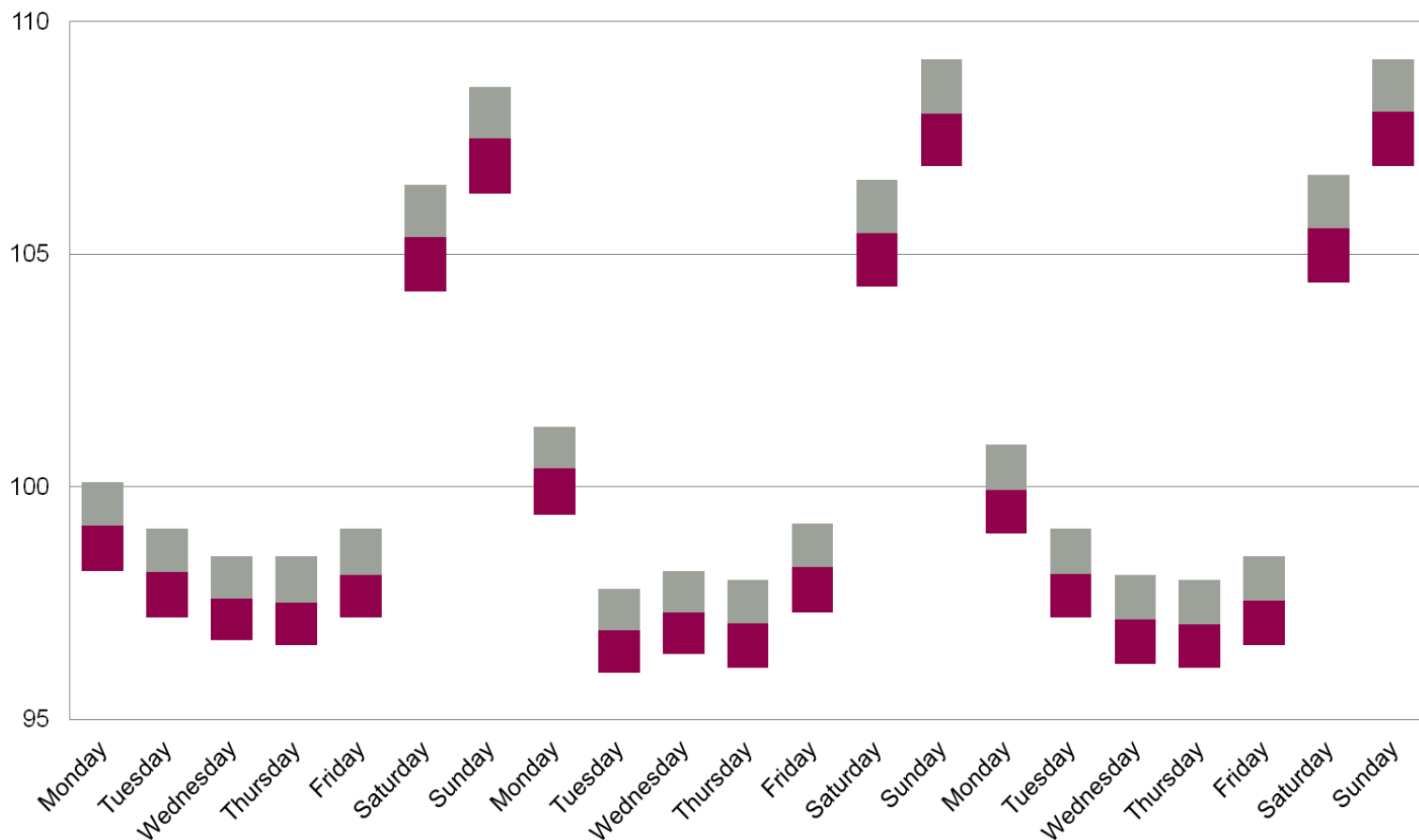
# RAMI by day of week

## 2009/10, 2010/11, 2011/12 HES



# SHMI by day of week

## 2009/10, 2010/11, 2011/12 HES + ONS



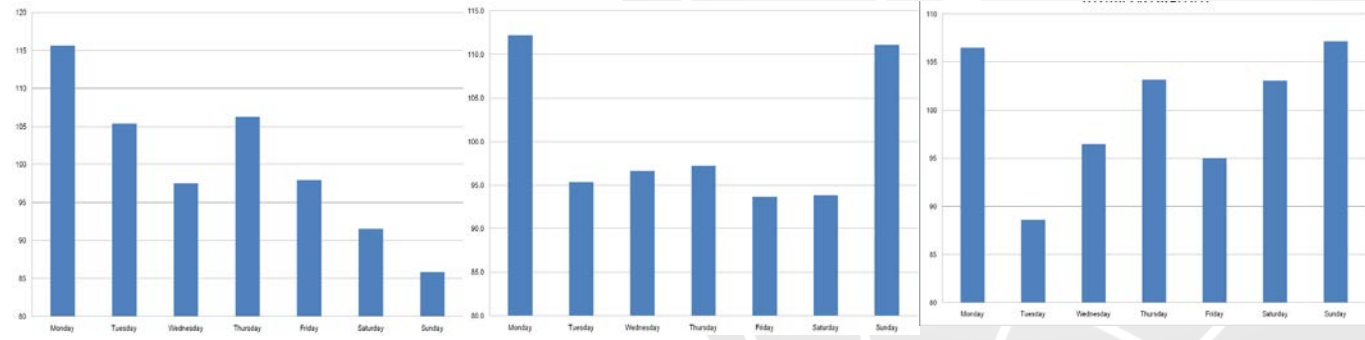


# Quality?

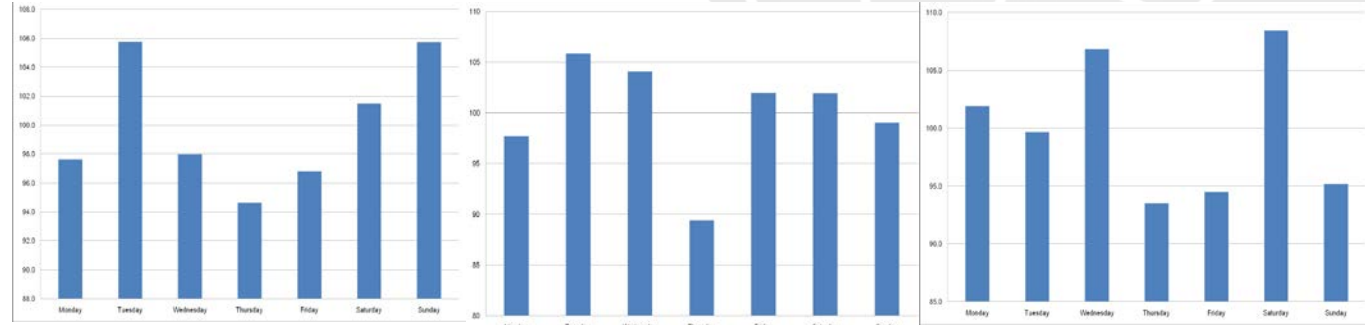
## RAMI by day of week

### For individual trusts

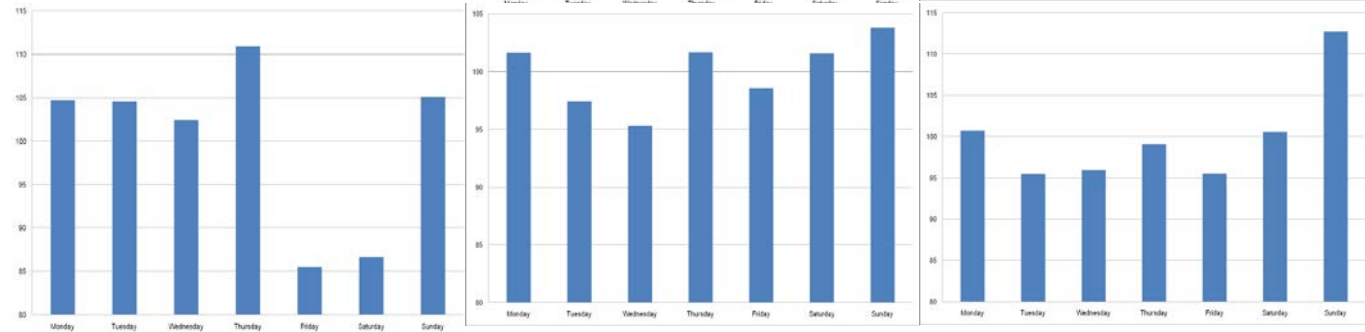
Monday?



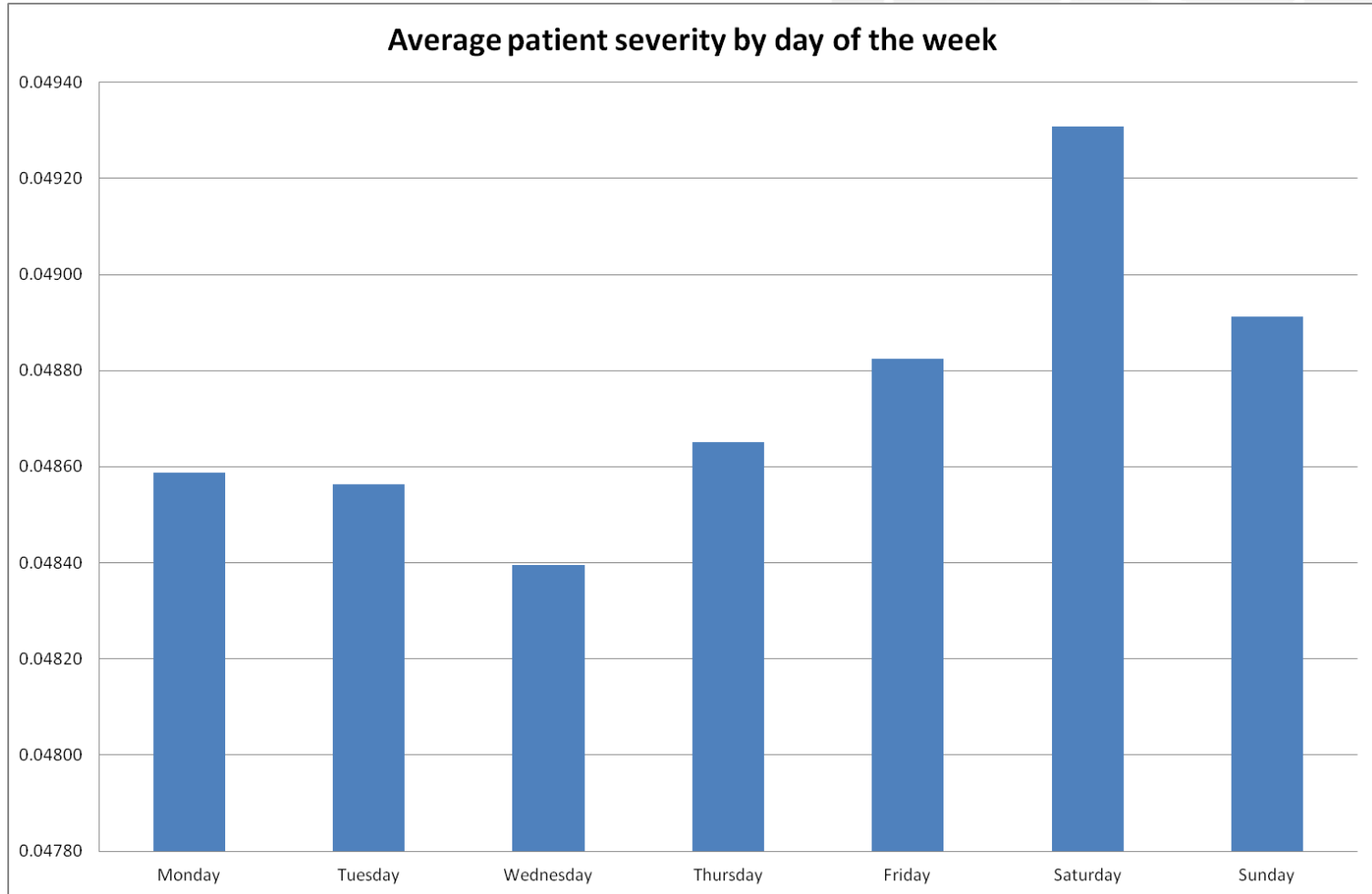
Tues/Wednesday?



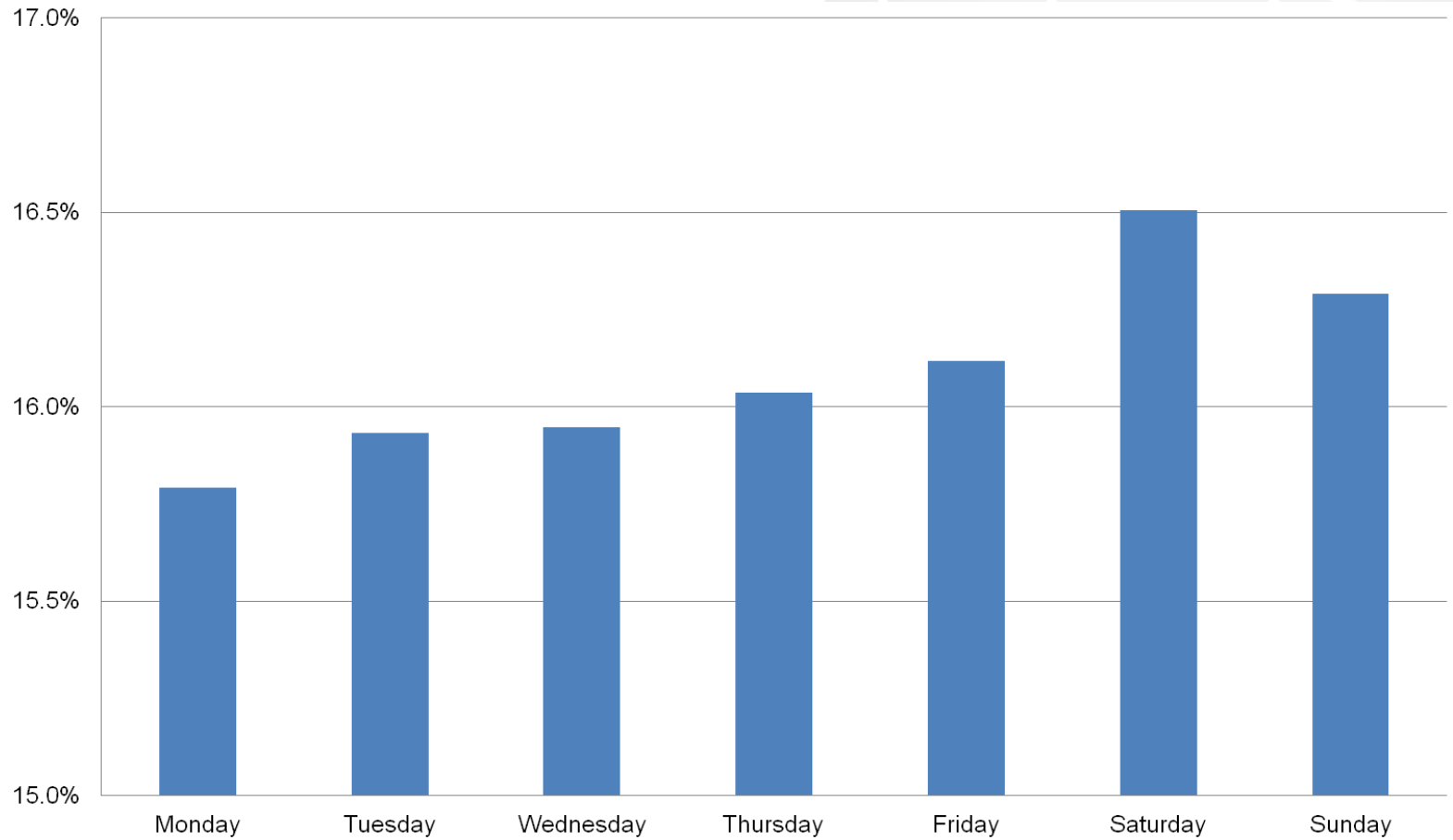
Thursday?



# Patient severity



# Emergency readmissions



# Small hospital sustainability

Specialty	"Small" hospitals			"Large" hospitals		
	Procs/day		No. of	Procs/day		No. of
	w/day	w/end	Cons	w/day	w/end	Cons
General Surgery	1.8	1.2	8.1	2.9	2.0	15.1
Urology	0.1	0.1	2.3	0.4	0.2	5.1
Trauma & Orthopaedics	2.2	1.9	7.8	3.6	3.0	15.0
ENT	0.3	0.2	2.2	0.6	0.5	4.5
Ophthalmology	0.0	0.0	2.7	0.3	0.1	7.8
Oral Surgery	0.1	0.1	0.1	0.4	0.4	0.1
Neurosurgery	0.0	0.0	0.0	0.3	0.2	2.0
Plastic Surgery	0.1	0.1	0.5	0.8	0.7	2.8
Cardiothoracic Surgery	0.0	0.0	0.4	0.1	0.0	2.2
Paediatric Surgery	0.0	0.0	0.1	0.1	0.1	1.1
Accident & Emergency	0.1	0.1	5.7	0.2	0.2	9.3
Anaesthetics	0.0	0.0	18.0	0.0	0.0	42.7
<b>Grand Total</b>	<b>4.7</b>	<b>3.6</b>	<b>47.9</b>	<b>9.6</b>	<b>7.4</b>	<b>107.8</b>

## Variation in activity

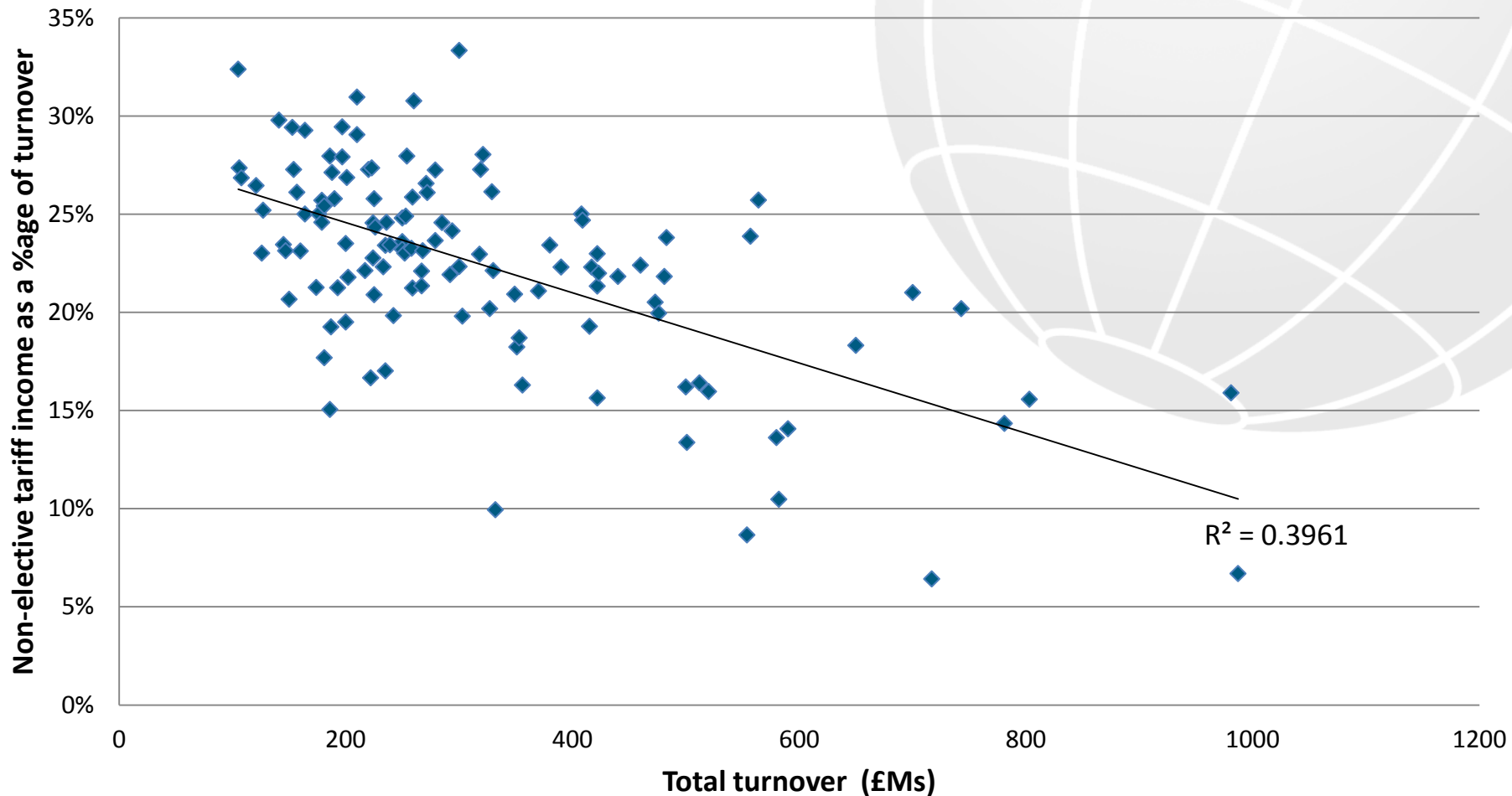
	<b>"Average" Trust</b>	<b>Range</b>
<b>A&amp;E</b>	90	25 - 285
<b>Maternity</b>	5	0 - 30
<b>1st OP</b>	100	
<b>EL</b>	35	10 - 105
<b>EM</b>	30	10 - 95
<b>EL + EM</b>	65	20 - 200
<b>Ratio</b>	20%	-30% - 340%

# Extremes of variation (EL:EM)

	A&E	Maternity	1st OP	EL	EM	EL + EM	Ratio
<b>Lowest 10</b>	80	5	100	20	25	45	-30%
	150	10	100	25	35	60	-30%
	80	5	100	15	25	40	-30%
	80	5	100	20	25	45	-20%
	85	5	100	20	25	45	-20%
	90	10	100	35	40	75	-10%
	50	0	100	25	25	50	-10%
	75	15	100	35	40	75	-10%
	80	5	100	25	30	55	-10%
	70	5	100	20	25	45	-10%
<b>Highest 10</b>	60	0	100	55	30	85	100%
	65	5	100	50	25	75	100%
	70	5	100	45	20	65	100%
	65	5	100	35	20	55	100%
	55	5	100	30	15	45	110%
	70	5	100	55	25	80	120%
	45	5	100	40	20	60	120%
	80	10	100	35	15	50	130%
	60	5	100	45	20	65	150%
	55	5	100	45	10	55	340%

# Small hospital sustainability?

Proportion of total turnover from non-elective tariff  
(121 Trusts)



## Cost of dementia

Extra length of stay	£120 million
Extra readmissions	£120 million
Additional falls	£ 25 million
Total	£265 million







# Thank you

18<sup>th</sup> November 2013

Paul Robinson

[probinson@chks.co.uk](mailto:probinson@chks.co.uk)

07973 234 830

[www.chks.co.uk](http://www.chks.co.uk)

