



iCompare

A&E Care and Emergency Admissions

Insight into your A&E performance

Waiting
times

Activity
profiles

Efficiency
data

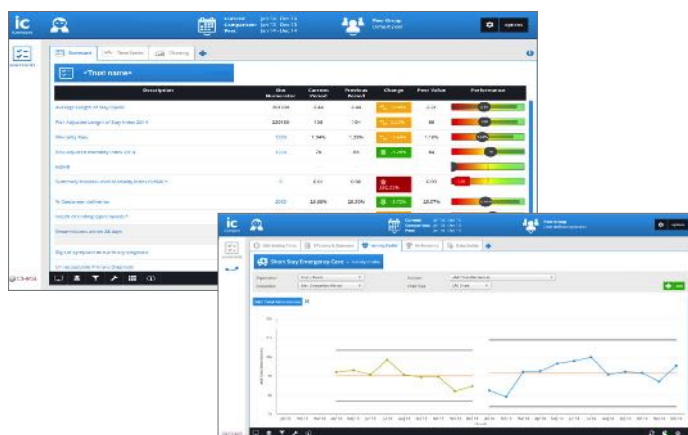
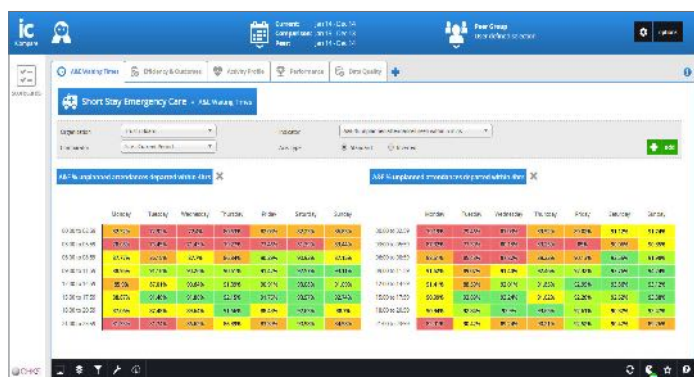
Outcome
measures

The challenge

Many patients now view A&E as a rapid route to care regardless of the severity of their condition. The result is an increase in often inappropriate volumes of demand by patients who could be managed differently. This puts an added strain on A&E resources and sometimes deflects attention from other patients whose conditions are more serious. Better understanding of the profile and flow of patients within urgent care is a key trigger to optimising the management of their care pathway.

The CHKS solution

A&E Care and Emergency Admissions helps acute Trusts' emergency departments to better understand demand from patient flow and treatment pathways, to support them in optimising processes and planning resources.



What does it allow you to do?

- **Benchmark A&E demand and services** against external national and selected peer groups in the current and previous period
- **View waiting time performance** by day of the week and time of arrival at A&E or individual provider sites against a series of indicators
- **Understand the quality of patient care.** E.g. length of stay and reattendances for emergency admissions and how this might be linked to an A&E attendance
- **Track the quality** of your A&E and Inpatient data
- **Profile patient demand and treatment pathways** in a number of ways. E.g. by clinical condition, type of attendance and GP practice
- **Overlay staffing levels against hourly demands** in A&E wards to improve resource planning*
- **Highlight activity** where treatment should take place in a more appropriate setting using A&E diagnosis, investigation and procedure information

*subject to staffing data availability.

Benefits

- **See at a glance** your A&E performance to help you understand the factors behind the growing use of A&E
- **Understand the impact** on efficiency and patient outcomes
- **Identify ways that care could be redirected** or resources scheduled more effectively to help you manage peaks in demand
- **Gives you fact based analytics** to further engage primary and social care colleagues
- **Easy to use** within the iCompare framework - with the option to customise filters, date and peers

Who is it for?

Urgent care teams and information or performance departments who need data available to them at a glance to help them make more informed decisions.



Have you read our latest 'What makes a top hospital?' report on accident and emergency care?



To find out more, please contact us:
T: + 44 (0)1789 761600 E: info@chks.co.uk
or visit chks.co.uk/iCompare.